

Application Instructions

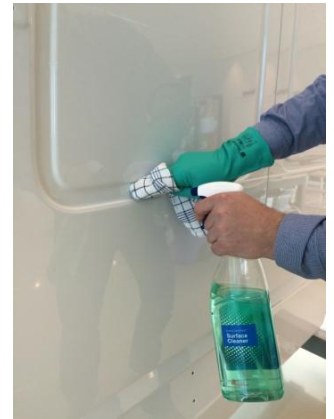
Issued: 03/2015



1. Use the right tools!



2. On 1 car there can be different corrugations: the application technique will be the same. Always start in the deepest part first!



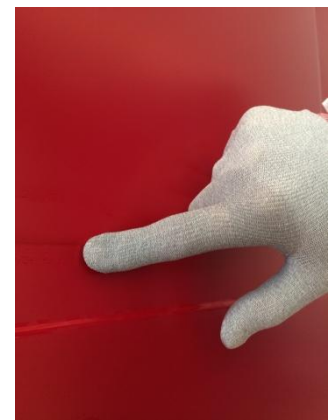
3. Clean the surface, focus on the critical areas



4. Apply the material using firm squeegee strokes. Fix the edges of the corrugation (do not stretch!)



5. First 1 side (make use of a wet glove)



6. Then the other side.

Note: These application instructions can be used as a basic information on how to apply cast films in corrugations. As in this document only 1 type of corrugations is shown it should be used as a guideline. For specific information on different kinds of corrugation techniques, please check the Avery Dennison Graphics Academy online. Guidelines are applicable to: Avery Dennison MPI 1000 Series + DOL 1460/1480 Series overlamine, Avery Dennison 900 Super Cast film and Avery Dennison Supreme Wrapping Film.



7. Heat the material up to 45-55°C.



8. Stretch the material in the corrugation:
DEEPEST PART FIRST!



9. Then, at the same temperature, repeat for the opposite corrugation.



10. Fix the material in the remaining part of the corrugation.



11. Remove small air bubbles first (if present), and then reheat the stretched areas up to 80-90°C. Make sure to measure the temperature of the substrate, not of the airflow!



12. **DONE!**